



 3  2  113 m²  29 m²  commun

New project of 15 south facing apartments at the edge of the beautiful and typical Spanish village of Hondon de las Nieves, perfect for people who like nature and a bit further away from the sea and beaches. The apartments come with 3 bedrooms, 2 bathrooms, an open living / dining room with open kitchen and terrace. Also 2 bed apartments available (ref. NEW-0028a). Included in the price are parking space and storage, pre-installation of airco and photovoltaic panels. The building has a lift and there is a communal pool as well to enjoy hot summer days and nights.

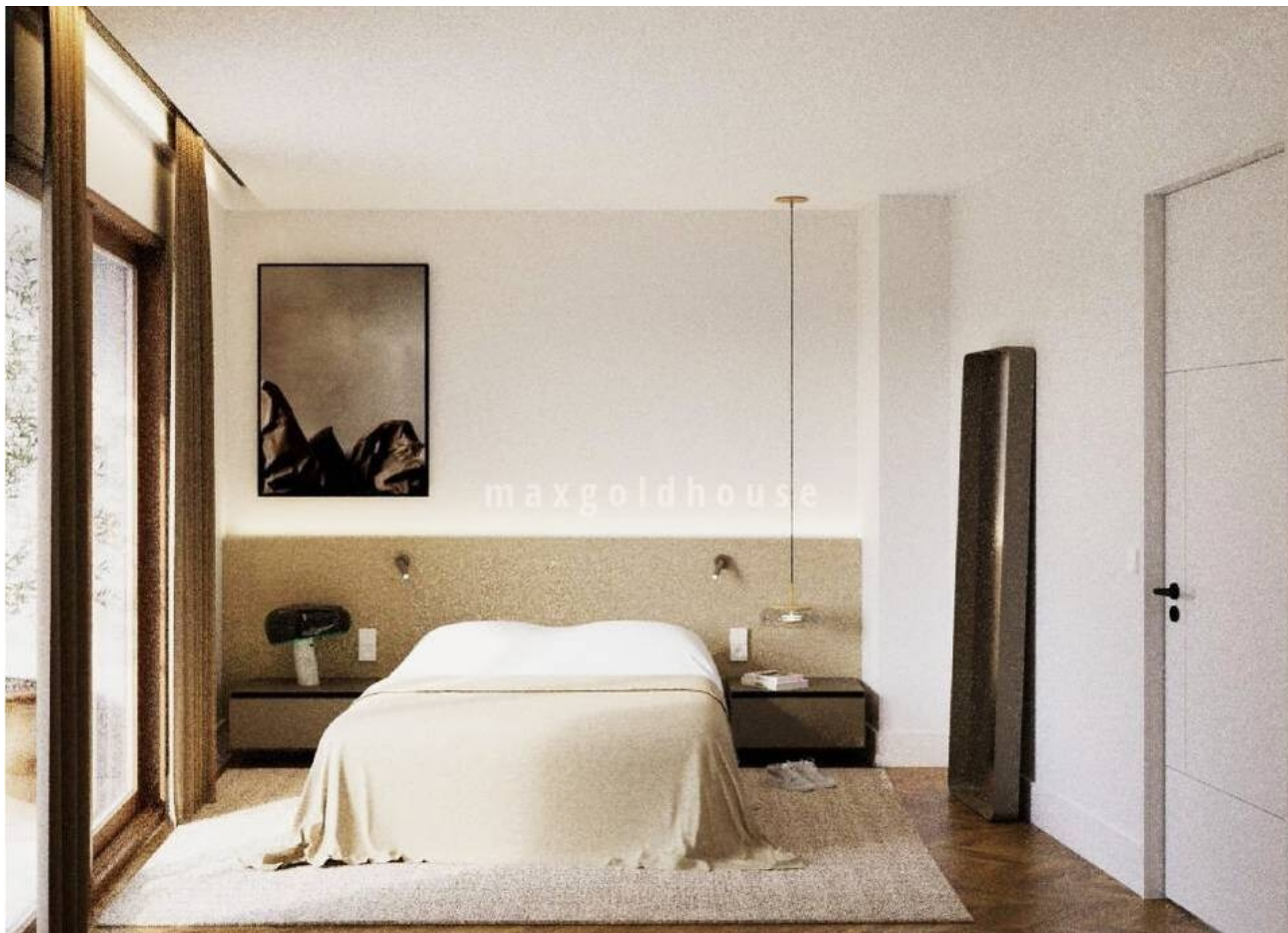
ellen@maxgoldhouse.com
+34 657 612 295















3



2

113 m²29 m²

community

New project of 15 south facing apartments at the edge of the beautiful and typical Spanish village of Hondon de las Nieves, perfect for people who like nature and a bit further away from the sea and beaches. The apartments come with 3 bedrooms, 2 bathrooms, an open living / dining room with open kitchen and terrace. Also 2 bed apartments available (ref. NEW-0028a). Included in the price are parking space and storage, pre-installation of airco and photovoltaic panels. The building has a lift and there is a communal pool as well to enjoy hot summer days and nights.